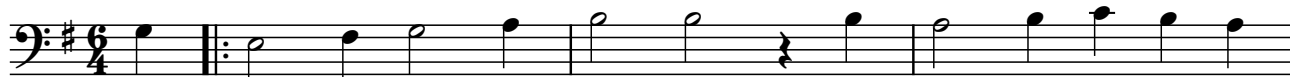


Dalum revisited

Katolsk valfartssang / PUP

1. Procession, Når mørket jorden blinder

A $\text{♩} = 55$ 

1) Når mør - ket jor - den blin - der, og da - gen ta - ger
e - vig Gud, ske æ - re i hø - je him - mel -

4



af den tid os da på - min - der om dø - dens mør - ke
-kor. som væg - ter vil - le væ - re for os, på jor - den

8



grav. Lys for os, Je - sus sød ved hvert et fjed til
bor! Det rin - ger nu af vagt. For nat - ten god fald

1.

2.

a tempo rall.....

12



gra - vens sted, og giv os sa - lig død 9) Dig,
Gud_ til fod! Tag ti - den vel i agt!

16

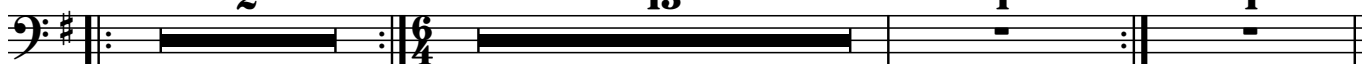
B a tempo
2**C** Procession
13

1.

1

2.

1



Baritone

2. Procession, Vægter vil da mørkets rige

A

Musical staff for section A, starting at measure 1. The staff is in bass clef with a key signature of two flats (B-flat and E-flat) and a common time signature (C). It contains six measures of music, each with a whole note. The notes are: G2 (marked with a '2'), G2 (marked with a '2'), F2 (marked with a '1'), F2 (marked with a '1'), G2, and G2.

10

B

Musical staff for section B, starting at measure 10. The staff is in bass clef with a key signature of two flats. It contains six measures of music, each with a whole note. The notes are: G2 (marked with a '1'), G2 (marked with a '1'), F2, F2, G2, and G2. The staff ends with a double bar line and a common time signature (C).

16

Musical staff for section C, starting at measure 16. The staff is in bass clef with a key signature of two flats. It contains six measures of music, each with a whole note. The notes are: G2 (marked with a '2'), G2 (marked with a '1'), F2 (marked with a '2'), F2 (marked with a '1'), G2 (marked with a '2'), and G2 (marked with a '2'). The staff ends with a double bar line and a common time signature (C).

24

C

Musical staff for section C, starting at measure 24. The staff is in bass clef with a key signature of two flats. It contains six measures of music, each with a whole note. The notes are: G2 (marked with a '1'), G2 (marked with a '2'), F2 (marked with a '1'), F2 (marked with a '2'), G2 (marked with a '1'), and G2 (marked with a '2'). The staff ends with a double bar line and a common time signature (C).

33

D

Procession

E

Musical staff for section D and E, starting at measure 33. The staff is in bass clef with a key signature of two flats. It contains six measures of music, each with a whole note. The notes are: G2 (marked with a '1'), G2 (marked with a '2'), F2 (marked with a '1'), F2 (marked with a '2'), G2 (marked with a '2'), and G2 (marked with a '2'). The staff ends with a double bar line and a common time signature (C).

41

Musical staff for section E, starting at measure 41. The staff is in bass clef with a key signature of one sharp (F#) and a common time signature (C). It contains six measures of music, each with a whole note. The notes are: G2 (marked with a '1'), G2 (marked with a '2'), F2 (marked with a '1'), F2 (marked with a '2'), G2 (marked with a '1'), and G2 (marked with a '2'). The staff ends with a double bar line and a common time signature (C).

50

Musical staff for section E, starting at measure 50. The staff is in bass clef with a key signature of one sharp (F#) and a common time signature (C). It contains two measures of music, each with a whole note. The notes are: G2 (marked with a '1') and G2 (marked with a '1'). The staff ends with a double bar line and a common time signature (C).