

Melodica & Three-hole Pipe in G

# Naturopera

Karin Sjöholm

Poul Udbye Pock-Steen

## 1. Tema fra ouverture

Mel.

♩ = 105

*p*

6

1.

2.

1

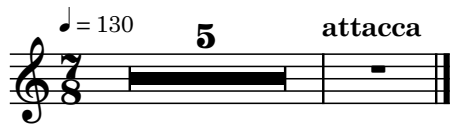
13

1

Melodica & Three-hole Pipe in G

2. Recitativ

Mel.



Mel.

### 3. 'Kæreste publikum' - March

A

March ♩. = 100

Musical notation for measures 1-3 of section A. The key signature has one flat (F major/D minor) and the time signature is 12/8. The melody consists of eighth notes with stems pointing down.

Musical notation for measures 4-6 of section A. Measure 6 ends with a fermata over a quarter note.

Musical notation for measures 7-9 of section A. Measure 9 ends with a fermata over a quarter note.

Musical notation for measures 10-12 of section A. The tempo marking "calando..... a tempo" is placed above the staff. Measure 12 ends with a fermata over a quarter note and a key signature change to two sharps (D major/B minor).

Musical notation for measures 13-17 of section B. The key signature has two sharps (D major/B minor). The tempo marking "calando a tempo" is placed above the staff. Measure 13 starts with a first ending bracket. Measure 17 ends with a first ending bracket.

Musical notation for measures 18-20 of section B. Measure 20 ends with a fermata over a quarter note.

Musical notation for measures 21-23 of section B. The tempo marking "rall....." is placed above the staff. Measure 23 ends with a fermata over a quarter note and a key signature change to one sharp (G major/F# minor).

24 **C** ♩ = 90

31 **D**

35 **molto rall.**

### 4. Evt. efterspil mens børnene leder efter skatten

Mel.

♩ = 105

