

Melodica & Three-hole Pipe in G

Naturopera

Karin Sjöholm

Poul Udbye Pock-Steen

1. Lærkens præsentation - fløjtesolo

♩ = 90

Mel.

4

♩ = 80

1

1

calando

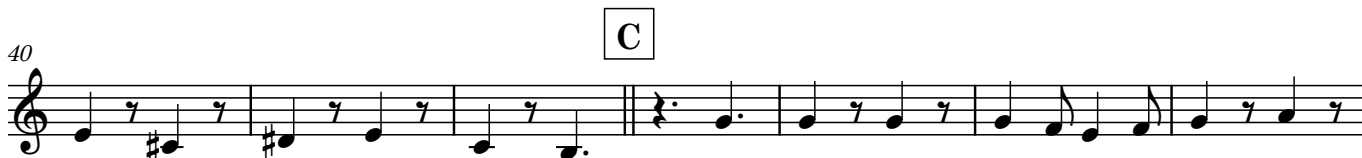
9 a tempo molto calando

Melodica & Three-hole Pipe in G

2. Lærkesangen

Mel.

A ♩ = 85



Melodica & Three-hole Pipe in G

3. Recitativ - frøsangen

♩ = 90

Mel.

7

molto *lentando*

1

attacca

The musical notation is on a single staff in treble clef with a key signature of one sharp (F#) and a common time signature (C). It begins with a quarter rest, followed by a measure of a whole note G4. The second measure contains a thick black bar with a '7' above it, indicating a seven-measure rest. The third measure contains a quarter rest. The fourth measure contains a quarter note G4. The piece concludes with a double bar line. Performance markings include 'Mel.' in a box, 'molto *lentando*', and 'attacca' with a '1' above it.

Melodica & Three-hole Pipe in G

4. Frø-sangen

Tacet

Mel.

5. Tror I virkelig, at naturen er matematik?

A $\text{♩} = 95$ **3** poco allarg.... **B** a tempo $\text{♩} = 85$

9 poco allarg. **C** a tempo $\text{♩} = 80$

15 **D** *f*

20

25 molto calando **E** a tempo $\text{♩} = 95$ **2** **F** poco lentando a tempo $\text{♩} = 85$

32 allarg. **G** a tempo $\text{♩} = 80$

38 *f*

43 **H**

f

48 *molto allarg.* **I** ♩ = 95 *molto lentando* *a tempo* ♩ = 85 **J**

56

62 *accelerando*..... **1** **1** **3** ♩ = 60

71 **K** ♩ = 78

76 *poco accel.*..... **L** ♩ = 80

81

85 1. **2** *molto rall.*.....

Mel.

6. Instruksionssang - Frø

♩ = 65

