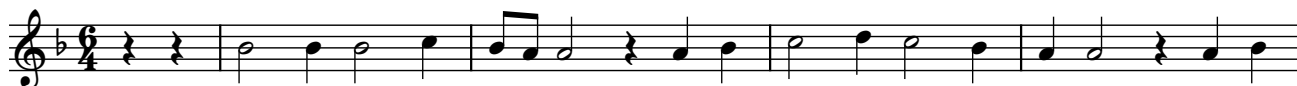


Mui grandes noit e dia

1. Mui grandes noit' e dia

A $\text{♩} = 60$
Omkvæd



§ Vers
B Kun i sidste vers



32 C Omkvæd instrumentalt

36

40

44 D Harpebro E Instrumentalt vers

Fine

8

55

60

65

69 F D.S. al Fine
Instrumentalt omkvæd
tacet al fine