

Romantic soprano

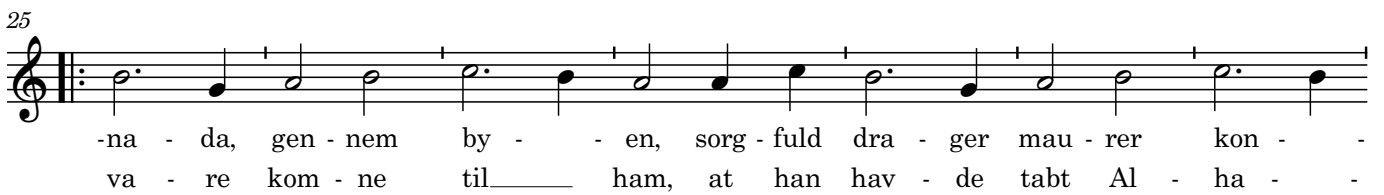
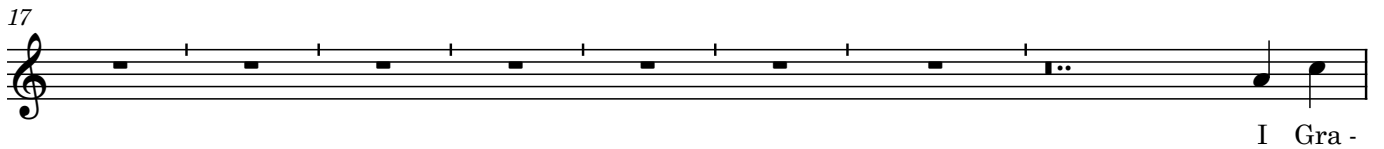
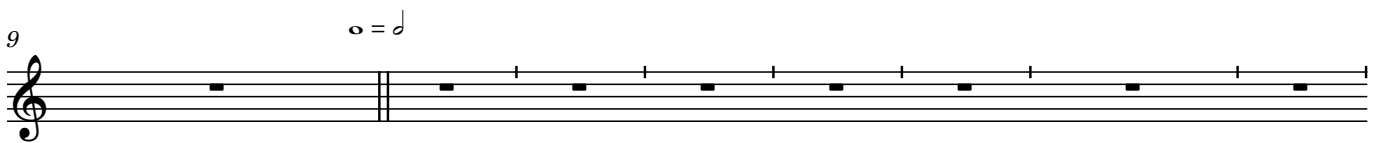
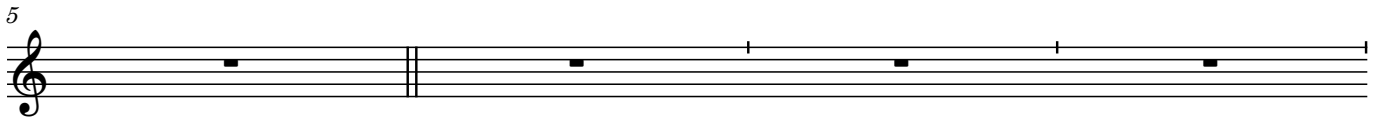
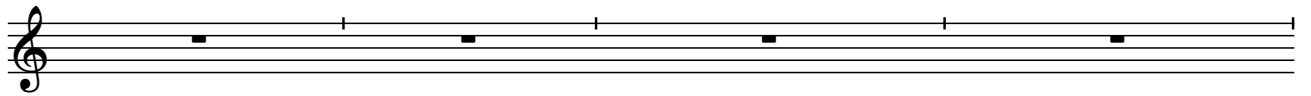
Tableau IV

Tacet

Tacet

3. Vee mig, mit Alhama

♩ = 65



2

Romantic soprano

32

- gen, fra El - vi - ras port han ri - - der hen til por - ten Bi - va -
- ma, bre - ve - ne ha smed til jor - den, den som brag - te dem han

39

In a spoken style

- rram - bla, Ve mig___ mit Al - ha - ma! Bre - ve steg ned
dræb - te, Og han

44

af sit muld - dyr, sat - te sig på hes - ten, red___ så til Al -

51

- ham - bra, lod det sking - re sølv - trom - pet og ke - del trom - me.

Spoken: 'Og maurene forsamles
og han forkyndte dem sit tab;
den ældste af præsterne forkyndte
ham sin skæbne:

58

Soundscape of church bells and insects

Ve mig___ mit Al - ha - ma! Kun din ret ske

63

dig, o kon - - ge! du for - tjen - te vær - re skæb - -

69

- ne. Som du Al - ha - ma har mis - - tet, mis - te snart du

75

poco rall...... $\text{♩} = \text{♩}$ *Poco lento* *rit.*.....

skal dit ri - ge!___ Ve mig,___ mit___ Al - ha - -

80

a tempo Without steady pulse $\text{♩} = 55$

- ma!

86

1 3 4

The musical notation consists of a single staff in treble clef. Measure 86 begins with a treble clef and a first finger fingering '1' above a quarter note on the first line. Measure 87 contains a half note on the second line with a fermata above it. Measure 88 is a whole rest, with a third finger fingering '3' above it. Measure 89 contains a quarter note on the second line with a fermata above it. Measure 90 is another whole rest, with a fourth finger fingering '4' above it. Measure 91 ends with a quarter note on the second line with a fermata above it, followed by a double bar line and repeat dots.